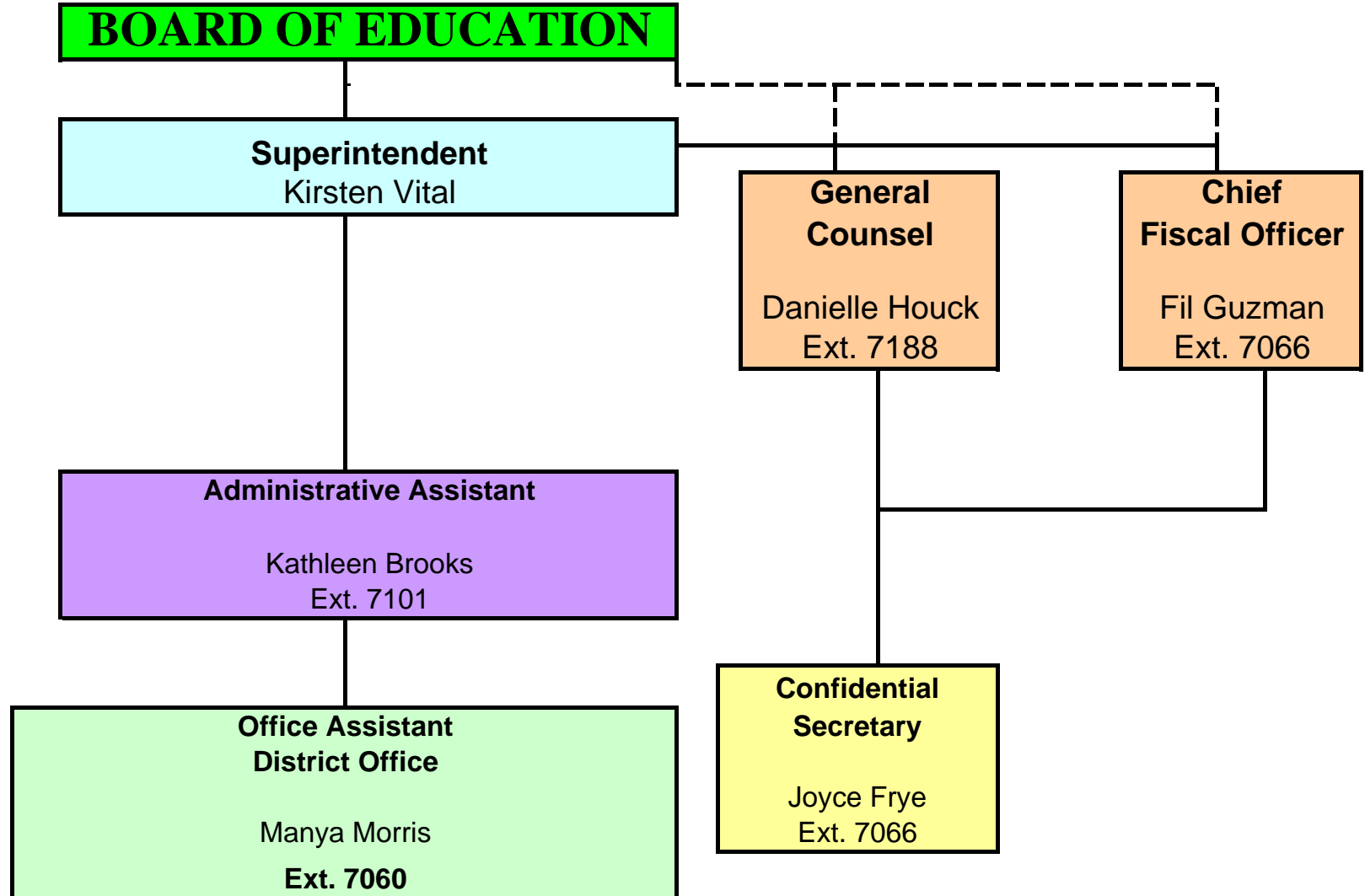


# ALAMEDA UNIFIED SCHOOL DISTRICT Superintendents Office Organizational Chart 2009-2010

(as of September 1, 2009)

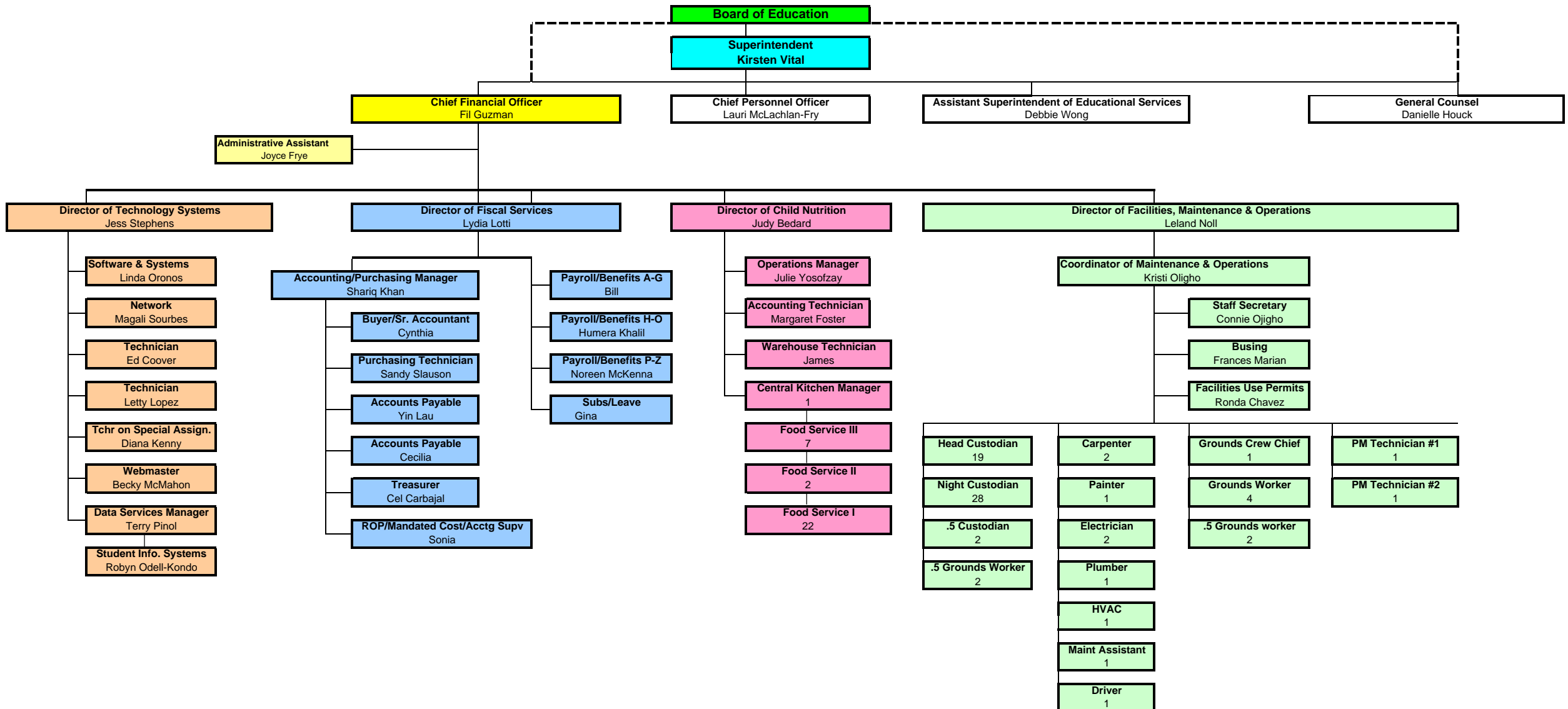
Plans, directs, manages and oversees the activities of the Alameda Unified School District.  
  
Under the direction of the Alameda Unified School District Board of Education



# ALAMEDA UNIFIED SCHOOL DISTRICT

## Organizational Chart for CFO Division

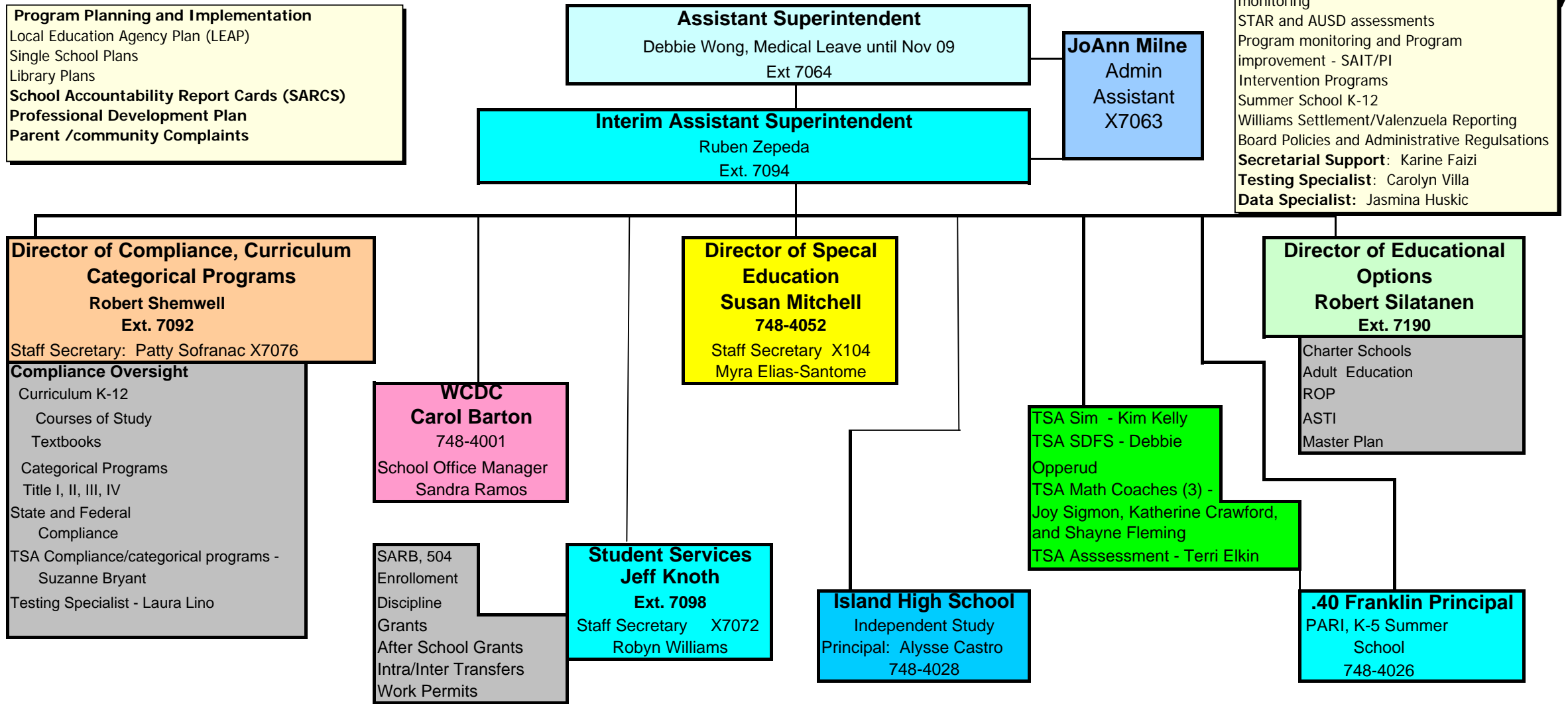
(as of September 1, 2009)



# ALAMEDA UNIFIED SCHOOL DISTRICT

## Educational Services Organizational Chart

(as of September 1, 2009)



# ALAMEDA UNIFIED SCHOOL DISTRICT

## Human Resources Office Organizational Chart

### 2009-2010

(as of September 1, 2009)

Plans, directs, manages, and oversees the activities and operations of Human Resources Department.

Includes: Labor management, negotiations, recruitment, application processing, selection, position and salary placement and maintenance of all personnel files.

Position Control  
Worker's Compensation  
Credential Analyst  
BOE Preparation

**Chief Human Resources Officer**  
Laurie McLachlan-Fry  
Ext. 7069

**Human Resources Manager**  
Mary Hallford  
Ext. 7132

**BTSA/PAR Coordinator**  
Mercy Jesswani  
Ext. 7027

**Human Resources Specialist**  
Classified Employees  
Clerical Subs  
Ext. 7130  
**Maria Bonino**

**Human Resources Technician**  
Certificated Employees  
Guest Teachers  
Ext. 7131  
**Joie Garchar**

**Human Resources Technician**  
BTSA/PAR  
Para Sub  
Ext. 7070  
**Cathy Calais**